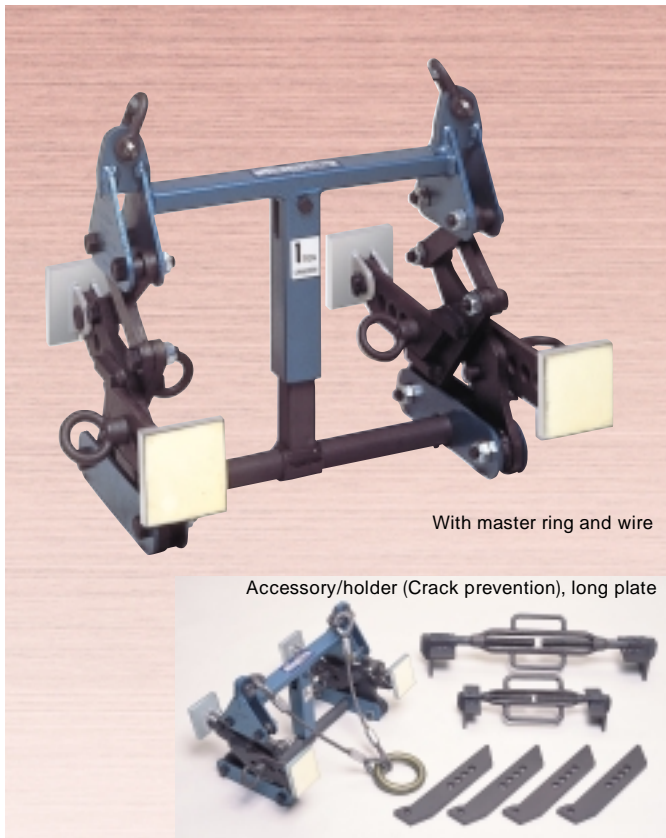




AUTOMATIC INTERNAL EXPANDING LIFTING CLAMP

for U-shaped concrete gutter (Non-marring type) PAT.



BUC 1A-2A

Clamp designed for lifting of reinforced concrete U-shaped gutters (Automatic attaching and detaching mechanism will increase productivity)

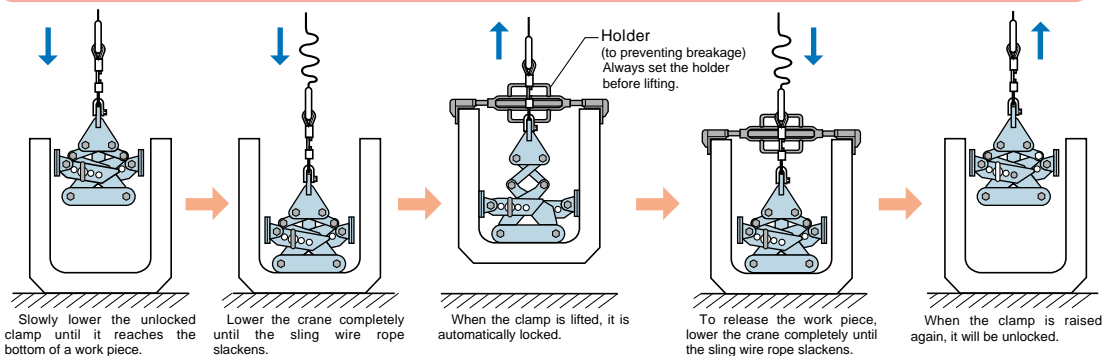
FEATURES

- Equipped with the crack prevention holders for reinforced concrete U-shaped gutters(Use with the main body)
- The clamping range of this clamp can be extended by replacing the adjusting long plates.
- This clamp is suitable for eight or seven different sized work pieces.
- The automatic clamping and releasing mechanism of this clamp increases productivity and efficiency and will reduce the working time.
- The special durable polyurethane rubber is applied on the pads to protect insides of U-shaped concrete gutters from damages.
- The clamp will not interfere with a leveling string and will not need a clearance between concrete structures.

SPECIFICATIONS

Item No.	Rated capacity (kg)	Clamping range (mm)		Weight (kg)
		Short adjusting plates	Long adjusting plates	
BUC 1A	1000	220 ~ 270	400 ~ 450	19 (Short type)
		270 ~ 320	450 ~ 500	21 (Long type)
		320 ~ 370	500 ~ 550	
		370 ~ 420	550 ~ 600	
BUC 2A	2000	250 ~ 300	400 ~ 450	34 (Short type)
		300 ~ 350	450 ~ 500	36 (Long type)
		350 ~ 400	500 ~ 550	
		—	550 ~ 600	

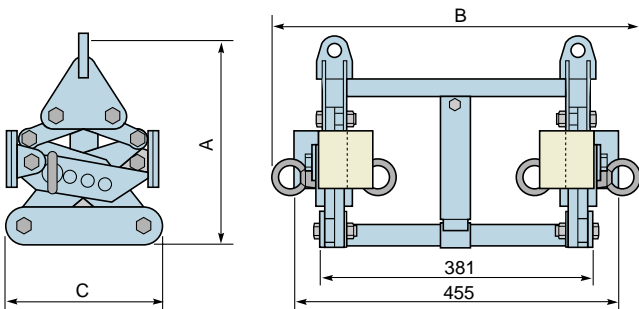
Automatic releasing mechanism



EXAMPLE OF USE



⚠ For safety always lift long work pieces with a balance at 2 or more points.



DIMENSIONS TABLE

Item No.	A	B	C
BUC 1A	290 ~ 418	514	202
BUC 2A	350 ~ 480	536	250

(Unit:mm)

